

Park Hill School District - Plaza Middle School A/V Upgrades



Park Hill School District

Park Hill School District
Department of Technology
7703 NW Barry Rd Kansas City, MO 64153

7703 NW Barry Rd Kansas City, MO 64153

Park Hill Plaza MS A/V Upgrades

Plaza Middle School
6501 NW 72nd St, Kansas City, MO 64151

100% Bid Set

Drafted By:
NK
Approved By:

Title: _____

Date: _____

Scale:

Sheet Size:
ANSI B (11 x 17)

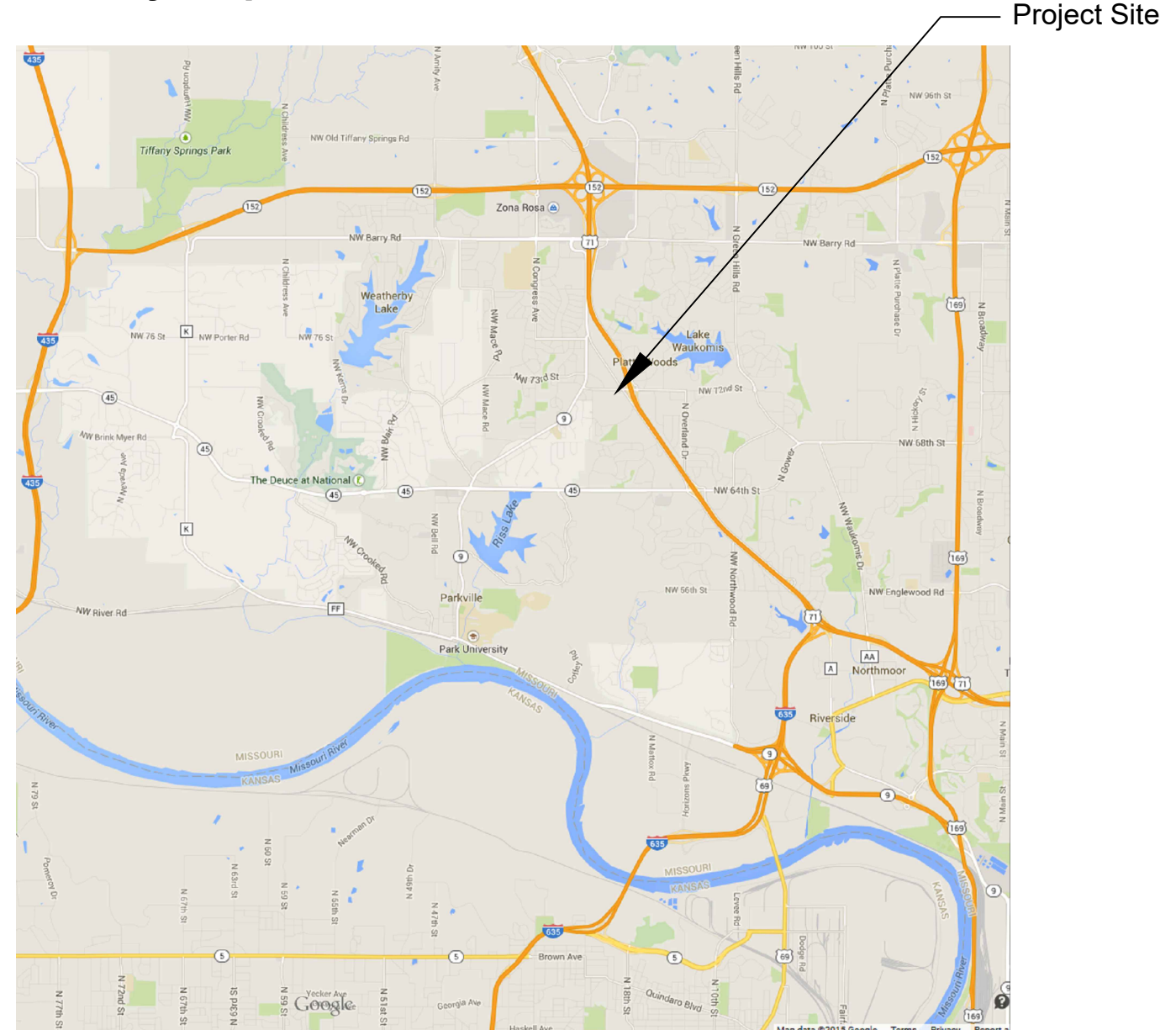
COVER

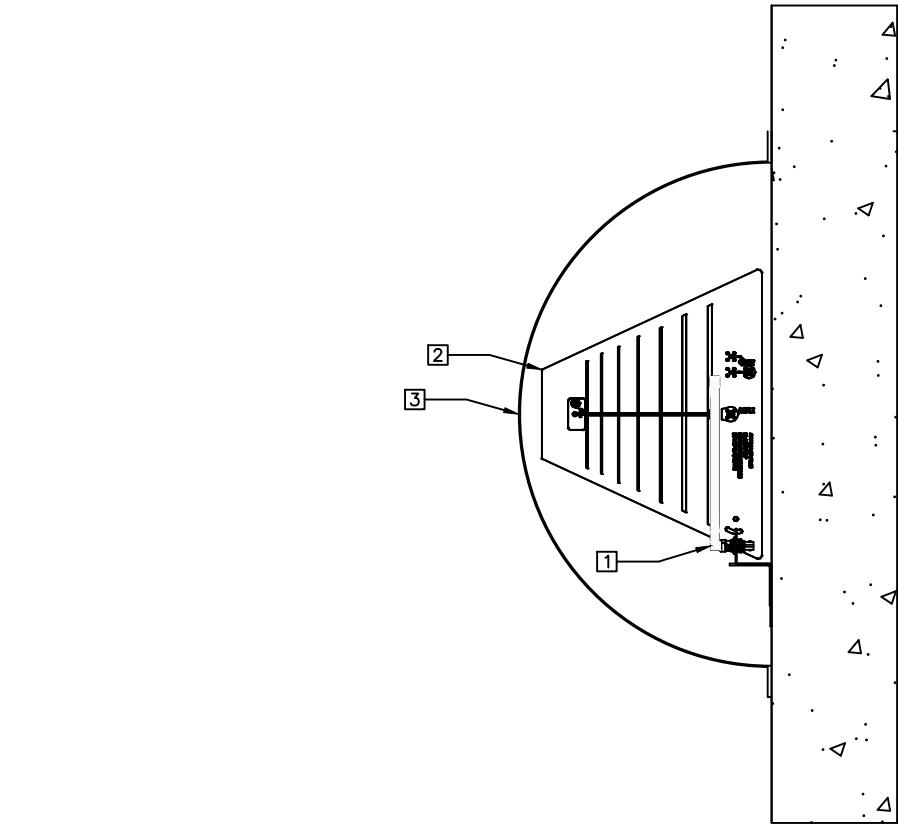
SITE

Address

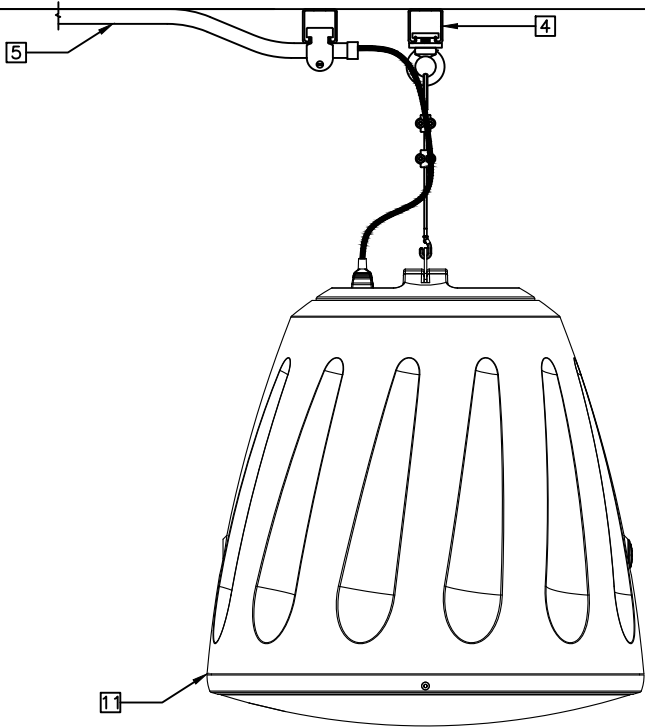
Plaza Middle School
6501 NW 72nd St
Kansas City, MO 64151

Vicinity Map

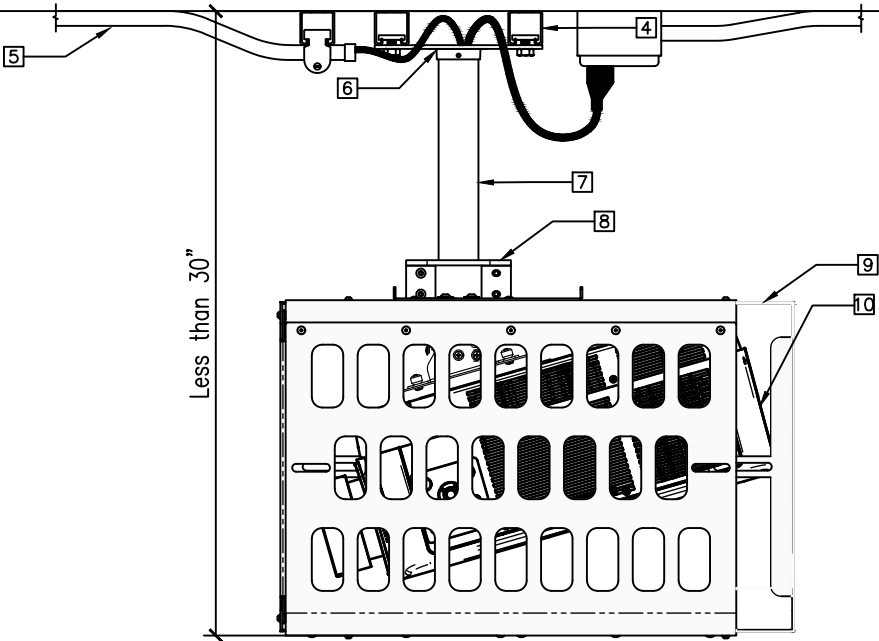




D1Antenna Mounting Details
NO SCALE



D3Speaker Mounting Details
NO SCALE




D2Projector Mount Details
NO SCALE

GENERAL NOTES

- 1 INSTALL ALL COMPONENTS PER MANUFACTURER'S SPECIFICATIONS AND INSTRUCTIONS.
- 2 THE SWL OF ANY ONE COMPONENT OR FITTING MUST NOT BE LESS THAN 15% GREATER THAN THE WEIGHT OF THE TOTAL EQUIPMENT BEING SUPPORTED.
- 3 THESE DRAWINGS MUST NOT REPLACE A STRUCTURAL ENGINEER. THESE DRAWINGS ARE SOLELY FOR THE PURPOSE OF DEPICTING THE MINIMUM EXPECTATION OF INSTALLATION TO PHSD.

SHEET NOTES

- 1 LISTEN TECHNOLOGIES LA-123 90° HELICAL ANTENNA (72MHZ). INSTALL USING SHURE UA505 MOUNTING BRACKET AND BNC ADAPTER FOR REMOTE ANTENNA MOUNTING.
- 2 RF VENUE DFINW DIVERSITY FIN™ ANTENNA, INSTALL MODEL. INSTALL USING THE INCLUDED L-BRACKET WALL-MOUNT KIT
- 3 CALIFORNIA QUALITY PLASTICS HEMI24 24" CLEAR ACRYLIC HEMISPHERE INSTALLED PROTECT BOTH ANTENNAS.
- 4 1-5/8 X 1-5/8 X 14 GA STEEL CHANNEL (STRUT) BETWEEN STRUCTURAL MEMBERS. USE APPROPRIATE STRUT HARDWARE.
- 5 THE CONTRACTOR SHALL EXTEND THE CONDUIT FROM ITS CURRENT LOCATION TO EACH DEVICE. THE CONDUIT SHALL BE INSTALLED IN A SIMILAR FASHION AS ANY PREVIOUS CONDUIT WAS INSTALLED. THE CONDUIT SHALL END NO MORE THAN 8" FROM THE RIG POINT.
- 6 LEGRAND AV CHIEF CMA110 8" (203 MM) CEILING PLATE, WHITE FOR ATTACHMENT OF COLUMN TO STRUCTURE.
- 7 LEGRAND AV CHIEF CMS SPEED-CONNECT FIXED EXTENSION COLUMN SERIES, WHITE. LENGTH TO BE DETERMINED AS NECESSARY TO ACHIEVE THE DESIRED DISTANCE ABOVE FINISHED FLOOR.
- 8 LEGRAND AV CHIEF RPA285W CUSTOM RPA PROJECTOR MOUNT (WHITE) AND ADJUST AS NECESSARY TO ALIGN PROJECTOR WITH SCREEN.
- 9 LEGRAND AV CHIEF PG4AW LARGE VENUE PROJECTOR GUARD, WHITE AND ADJUST AS NECESSARY TO FIT PROJECTOR.
- 10 HD201 AS REFERENCED ON SHEET AV.
- 11 PENDANT MOUNT SPEAKER AS SPECIFIED ON SHEET AV.



Park Hill School District

Building Successful Futures • Each Student • Every Day

Park Hill School District

Department of Technology

7703 NW Barry Rd Kansas City, MO 64153

100% Bid Set

Park Hill Plaza MS AV Upgrades

Plaza Middle School
6501 NW 72nd St, Kansas City, MO 64151

Drafted By:
NK

Approved By:

Title:

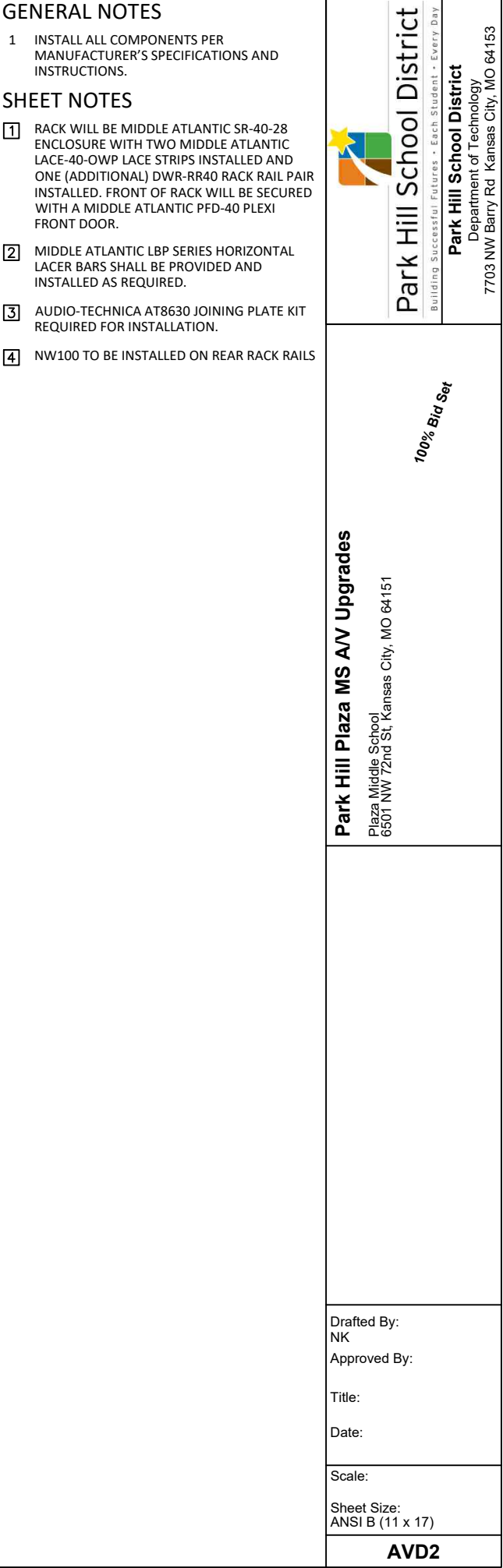
Date:

Scale:

Sheet Size:
ANSI B (11 x 17)

AVD1

Audio/Visual Details





Park Hill School District
Department of Technology
7703 NW Barry Rd Kansas City, MO 64114

Park Hill Plaza MS AV Upgrades

Plaza Middle School
6501 NW 72nd St, Kansas City, MO 64151

100% Bid Set

Drafted By:
NK
Approved By:

Title:

Date:

Scale:

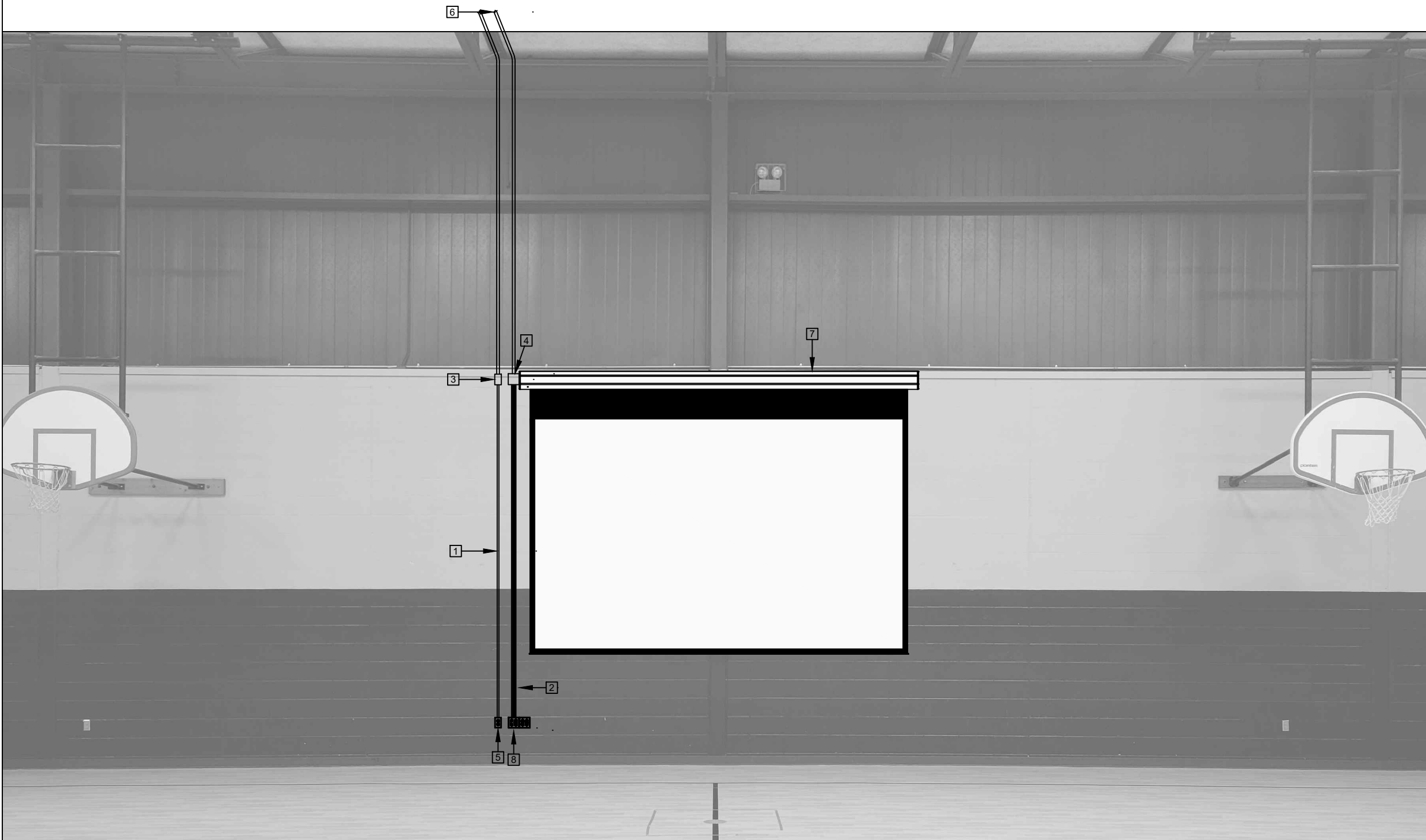
Sheet Size:
ANSI B (11 x 17)

AVD3

Audio/Visual Details

- 1 INSTALL ALL COMPONENTS PER MANUFACTURER'S SPECIFICATIONS AND INSTRUCTIONS.
- 2 ELECTRICAL WORK TO BE PERFORMED BY LICENSED ELECTRICIAN. LABEL FACEPLATE FOR EACH RECEPTACLE WITH PANEL AND CIRCUIT.

- 1 WIREMOLD V7000 SERIES RACEWAY AND FITTINGS.
- 2 WIREMOLD V2400 SERIES RACEWAY AND FITTINGS.
- 3 PROVIDE POWER TO SCREEN ON DEDICATED CIRCUIT AS SHOWN ON SHEET PLFP. LOCATE A WIREMOLD V7000 SERIES JUNCTION BOX AT THE END OF THE SCREEN HOUSING. CONTINUE POWER TO RECEPTACLE BELOW.
- 4 USE WIREMOLD V2444-2 EXTRA DEEP DEVICE BOX TO TRANSITION FROM V2400 SERIES RACEWAY TO 1" EMT CONDUIT. INSTALL WITH COLOR MATCHING BLANK COVER.
- 5 PROVIDE POWER RECEPTACLE TIED TO NEW CIRCUIT ABOVE.
- 6 CONTINUE CONDUIT TO NEAREST ACCESSIBLE CEILING.
- 7 INSTALL DA-LITE COSMOPOLITAN SERIES 70279L, 16:10, 100"X160" (189" DIAGONAL), MATTE WHITE, 120V (60HZ), WITH LVC AT THE TOP OF THE BLOCK WALL. PROVIDE EXTRA DROP TO ALLOW FOR BOTTOM OF THE SCREEN IMAGE TO REACH 48" AFF.
- 8 INSTALL CRESTON DM-TX-200-C-2G-B-T WALL PLATE [HD301] AND XLR INPUT/OUTPUT WALLPLATE [AUD301].



D1	East Wall Elevation 1/4" = 1'
----	----------------------------------

$$1/4" = 1'$$




General Notes

- 1 INSTALL ALL COMPONENTS PER MANUFACTURER'S SPECIFICATIONS AND INSTRUCTIONS.

Sheet Notes

- 1 INSTALL CRESTRON TSW-570-B-S TOUCH PANEL [CNTRL100] IN FSR WB-PR3G WINDOWED COVER ABOVE EXISTING RECEPTACLE, COORDINATE EXACT MOUNTING HEIGHT AND LOCATION WITH THE OWNER. MAKE A REASONABLE EFFORT TO CUT IN AND INSTALL FLUSH INTO THE BLOCK BEFORE USING SURFACE MOUNT BOX.
- 2 INSTALL CRESTRON DM-TX-200-C-2G-B-T WALL PLATE [HD301] AND XLR INPUT/OUTPUT WALLPLATE [AUD301] AT THE SAME HEIGHT AND NEAR THE EXISTING RECEPTACLE. MAKE A REASONABLE EFFORT TO CUT IN AND INSTALL FLUSH INTO THE BLOCK BEFORE USING SURFACE MOUNT BOX.



Park Hill School District

Building Successful Futures • Each Student • Every Day

Park Hill School District

Department of Technology

7703 NW Barry Rd Kansas City, MO 64153

Park Hill Plaza MS AV Upgrades

Plaza Middle School
6501 NW 72nd St, Kansas City, MO 64151

100% Bid Set

Drafted By:
NK

Approved By:

Title:

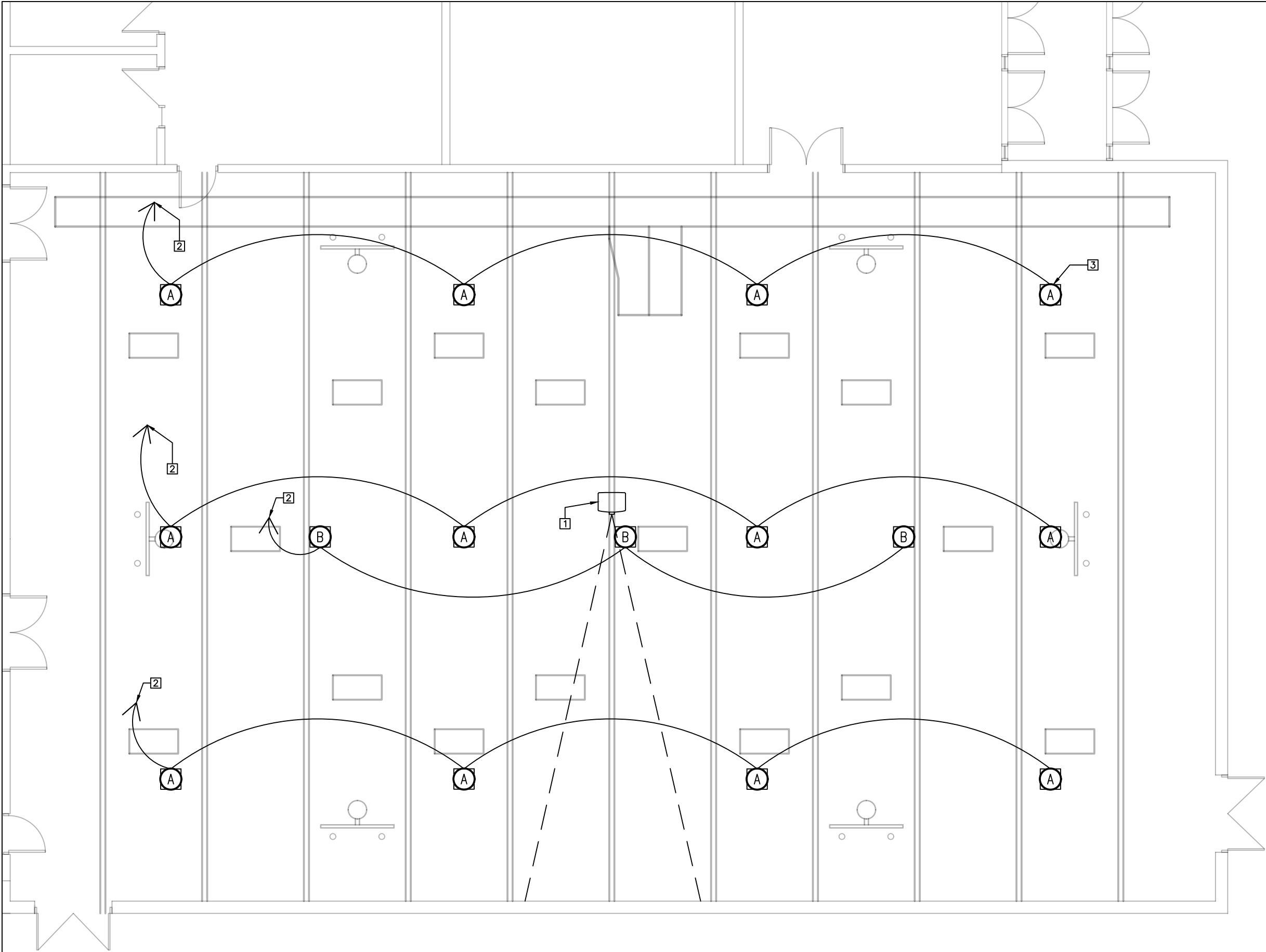
Date:

Scale:

Sheet Size:
ANSI B (11 x 17)

AVD4

Audio/Visual Details



GENERAL NOTES

1 INSTALL ALL COMPONENTS PER MANUFACTURER'S SPECIFICATIONS AND INSTRUCTIONS.

SHEET NOTES

- 1 HD201 MOUTING LOCATION. REFERENCE SHEET AV FOR SPECIFICATIONS AND DETAILS. REFERENCE SHEET AVD1 FOR MOUNTING DETAILS.
- 2 CONTINUES TO AUDIO/VISUAL EQUIPMENT RACK FOR CONNECTION WITH AMPLIFIER.
- 3 TYP 23' 9" TO FACE OF PENDANT SPEAKER.



Park Hill School District
Building Successful Futures • Each Student • Every Day

Park Hill School District
Department of Technology
7703 NW Barry Rd Kansas City, MO 64153

Park Hill Plaza MS AV Upgrades
Plaza Middle School
6501 NW 72nd St, Kansas City, MO 64151

100% Bid Set

Drafted By:
NK

Approved By:

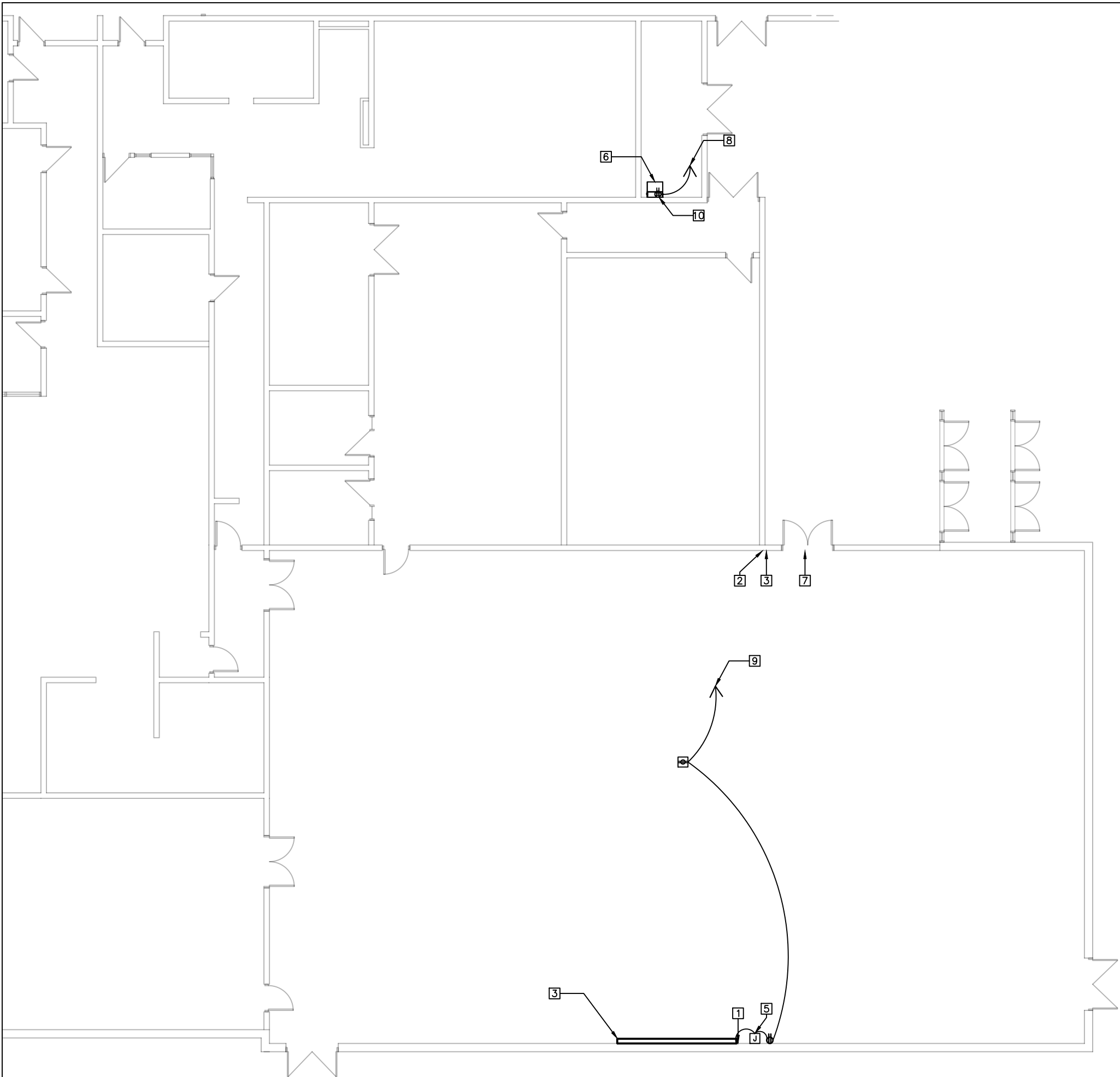
Title:

Date:

Scale:

Sheet Size:
ANSI B (11 x 17)

PLRCP



GENERAL NOTES

- 1 INSTALL ALL COMPONENTS PER MANUFACTURER'S SPECIFICATIONS AND INSTRUCTIONS.

SHEET NOTES

- 1 HD301 & AUD301 INSTALLED AT ROOM OUTLET HEIGHT.
- 2 HD302 & AUD302 INSTALLED AT ROOM OUTLET HEIGHT.
- 3 HD202 MOUNTING LOCATION. REFERENCE SHEET AV FOR SPECIFICATIONS AND DETAILS. REFERENCE SHEET AVD3 FOR MOUNTING DETAILS.
- 4 CNTRL100 MOUNTING LOCATION. REF SHEET AVD 4 FOR PLACEMENT.
- 5 INSTALL POWER RECEPTACLES AND TIE IN POWER TO PROJECTOR SCREEN FROM EXISTING LOCAL CIRCUITRY. REF SHEET AVD3.
- 6 AUDIO/VISUAL RACK. REFERENCE SHEET AVD2 FOR OWNER SPECIFICATIONS AND INSTALLATION DETAILS.
- 7 RF100 & RF200. CONSULT OWNER REGARDING HEIGHT AND EXACT PLACEMENT.
- 8 NEW CIRCUIT #1. FED FROM ELECTRICAL PANEL NL2.
- 9 NEW CIRCUIT #2. FED FROM ELECTRICAL PANEL NL2.
- 10 FOURPLEX RECEPTACLE INSTALLED IN BACKPAN OF AV RACK.



Park Hill School District

Building Successful Futures • Each Student • Every Day

Park Hill School District
Department of Technology

7703 NW Barry Rd Kansas City, MO 64153

Park Hill Plaza MS A/V Upgrades

Plaza Middle School
6501 NW 72nd St, Kansas City, MO 64151

100% Bid Set

Drafted By:
NK

Approved By:

Title:

Date:

Scale:

Sheet Size:
ANSI B (11 x 17)

PLFP