

**ADDENDUM NO. 1**

Issued: June 25, 2021

Project: Park Hill School District Congress MS FF+E

Project No. 21013.1

Owner: Park Hill School District  
7703 NW Barry Rd.  
Kansas City, MO 64153

Bidding Documents Issued: June 11, 2021

This Addendum includes these 2 page(s) and the following attachments:

Proposal Form Schedule:

Updated quantities for items: **C1, C3**

Revised Specifications: **C1, C3, C4, D3, D4, D5, T1**

Furniture Floor Plans: **A701**

**GENERAL – BIDDER'S QUESTIONS**

<b>G1</b>	<b>QUESTION:</b>	<b>RESPONSE:</b>
Q1	Will D3, D4, and D5 receive back enclosures for stack-on-storage?	Yes. Refer to revised Spec Sheets for D3, D4, D5
Q2	<b>C4, C5, C7 – Finishes don't match. C4 - Model #: HIGS6.F.E.IM.CU10.BLCK – is for textured black, but the base finish is listed as black. Do you want regular black or textured black for these chairs?</b>	C5 and C7 – No change;  C4 will be Regular Black; Refer to updated drawing C4
Q3	<b>T1 - You requested textured satin chrome (which does not exist). Only textured silver or textured charcoal is an option.</b>	Finish and Model # have been updated; Refer to revised T1
Q4	D3, D4, D5: Should Recessed Task Lights be added to each of these?	No

**ITEM SPECIFICATIONS****A1 ITEM TYPE: C1**

Quantity updated

**ITEM TYPE: C3**

Quantity updated



## ITEM SPECIFICATIONS (CONTINUED)

### ITEM TYPE: C4

Revised model #

### ITEM TYPE: D3

Added back enclosure

### ITEM TYPE: D4

Revised hutch, added back enclosure, and revised tackboard

### ITEM TYPE: D5

Revised credenza model #, added back enclosure

### ITEM TYPE: T1

Revised model # and base finish

## FURNITURE FLOOR PLANS

### A1 A701 FURNITURE FLOOR PLAN

Assistant Principal 106 – Tagged C7 Guest Chairs

Assistant Principal 106 – D4 Revised Stack-On-Hutch

**END OF ADDENDUM NO. 1**

Congress MS Admin - Furniture, Fixtures, & Equipment  
Job No. 21013.01

Phone #:

---

---

---

---

[illegible]

SEATING

Item No.	Item	100% Quantity	Specified Unit Cost	Specified Total Cost	Alternate Mfg. & Number	Alt. Unit Cost	Alt. Total Cost
C1	Administrative Chair	3.00					
C2	Administrative Chair	3.00					
C3	Support Staff Chair	4.00					
C4	Guest Chair with Arms	4.00					
C5	Guest Chair with Arms-Bariatric	1.00					
C6	Guest Chair W/O Arms	Not used					
C7	Guest Chair on Casters W/O Arms	25.00					
C8	Lounge Chair	1.00					
C9	Height Adjustable Ottoman	3.00					

Vendor Company:

Vendor Name:

Phone #:

DESKS

Item No.	Item	100% Quantity	Specified Unit Cost	Specified Total Cost	Alternate Mfg. & Number	Alt. Unit Cost	Alt. Total Cost
D1	Support Staff Desk 60"	1.00					
D2	Support Staff Desk and Return 72"	3.00					
D3	Private Office Suite	1.00					
D4	Private Office Suite	1.00					
D5	Private Office Suite	1.00					
D6	Private Office Desk	1.00					

Proposal Form Schedule

Congress MS Admin - Furniture, Fixtures, & Equipment

Job No. 21013.01

Vendor Company:

Vendor Name:

Phone #:

STORAGE

Item No.	Item	100% Quantity	Specified Unit Cost	Specified Total Cost	Alternate Mfg. & Number	Alt. Unit Cost	Alt. Total Cost
S1	Mobile Pedestal	5.00					
S2	Mobile Pedestal 2	6.00					
S3	2 Drawer Lateral File	2.00					
S4	5-Drawer Lateral File	4.00					
S5	Bookcase - 4 Shelf	6.00					
S6	Bookcase - 3 shelf	2.00					
S7	Wardrobe R	4.00					
S8	Wardrobe L	1.00					

Vendor Company:

Vendor Name:

Phone #:

TABLES

Item No.	Item	100% Quantity	Specified Unit Cost	Specified Total Cost	Alternate Mfg. & Number	Alt. Unit Cost	Alt. Total Cost
T1	Side Cube Table	1.00					
T2	Flip Top Table 24 x 60	4.00					
T3	Guest Table	1.00					

Project: Congress Admin Reno FFE  
Project #: 21013.1

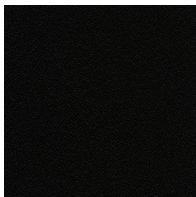
Issue Date: 14 JUN 2021  
Revision Date: 25 JUN 2021

Total Quantity: 3

**Item:** Administrative Chair  
**Manufacturer:** HON Company  
**Contact Name:** Kristi Furey  
**Contact Number:** P: 816.820.6258  
**Contact Email:** FureyK@honcompany.com  
**Series:** Ignition  
**Model #:** HIWM3.A.H.M.CU10.T.SB  
**Description:** Mesh Back upholstered task chair with height and width adjustable arms; pneumatic, back height adjustment, synchro-tilt, back angle adjustment, tilt tension, tilt lock, seat glide, five star base  
**S.H** 17.25"-21.75"  
**Finish:** Back: HON Mesh, Black  
Seat Upholstery: Centurion, Black  
**Base:** Standard Black  
**Glide/Caster:** Hard Caster



	W	D	H	A.H.	S.H.	DIA.
<b>Dimensions:</b>	27"	38"	44"			

**Finish:****Location:**

**Mfr:** HON

**Pattern:** CU10

**Color:** Black

**Refer to Fabric Spec:** F0

1. Image is for reference only. Colors, finishes, and various components shown in image may not apply. Ref. Item model number and description for correct information only.



Project: Congress Admin Reno FFE  
Project #: 21013.1

Issue Date: 14 JUN 2021  
Revision Date: 25 JUN 2021

Total Quantity: 4

**Item:** Support Staff Chair

**Manufacturer:** HON Company

**Contact Name:** Kristi Furey

**Contact Number:** P: 816.820.6258

**Contact Email:** FureyK@honcompany.com

**Series:** Ignition

**Model #:** HITL2.A.H.M.CU10.T.SB

**Description:** Low-Back Task Chair with adjustable arm height and width, mesh seat back, and a five-star base with hard casters. 360-degree swivel, pneumatic seat height adjustment, synchro-tilt, tilt tension, tilt lock, seat glide.

**Arm:** Height and Width Adjustable

**Finish:** Back: HON Mesh, Black  
Seat Upholstery: Centurion, Black

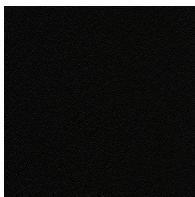
**Base Type:** Standard Black

**Glide/Caster:** Hard caster



	W	D	H	A.H.	S.H.	DIA.
<b>Dimensions:</b>	27.5"	39.5"	43"			

**Finish:**



**Location:**

**Mfr:** HON

**Pattern:** CU10

**Color:** Black

**Refer to Fabric Spec:** F0

1. Image is for reference only. Colors, finishes, and various components shown in image may not apply. Ref. Item model number and description for correct information only. Colors, finishes, and various components shown in image may not apply.

Project: Congress Admin Reno FFE  
Project #: 21013.1

Issue Date: 14 JUN 2021  
Revision Date: 25 JUN 2021

Total Quantity: 4

**Item:** Guest Chair with Arms  
**Manufacturer:** HON Company  
**Contact Name:** Kristi Furey  
**Contact Number:** P: 816.820.6258  
**Contact Email:** FureyK@honcompany.com  
**Series:** Ignition  
**Model #:** HIGS6.F.E.IM.CU10.T  
**Description:** Upholstered guest chair with fixed arms, glides, steel frame, and contoured back. Stackable 4 high  
**Finish:** Back: HON Mesh, Black  
Seat: Centurion, Black  
**Base:** Black  
**S.H** 18 3/8"  
**Arm:** Fixed  
**Glide/Caster:** Glide



	W	D	H	A.H.	S.H.	DIA.
<b>Dimensions:</b>	25"	21.75"	33.5"			

**Finish:****Location:**

**Mfr:** HON

**Pattern:** CU10

**Color:** Black

**Refer to Fabric Spec:** F0

1. Image is for reference only. Colors, finishes, and various components shown in image may not apply. Ref. Item model number and description for correct information only.

Project: Congress Admin Reno FFE  
Project #: 21013.1

Issue Date: 14 JUN 2021  
Revision Date: 25 JUN 2021

Total Quantity: 1

**Item:** Private Office Suite  
**Manufacturer:** HON Company  
**Contact Name:** Kristi Furey  
**Contact Number:** P: 816.820.6258  
**Contact Email:** FureyK@honcompany.com  
**Manufacturer:** HON Company  
**Series:** 10500 Series  
**Finish:** Harvest CC  
**Description:** Office suite with factory-configured desks and returns with full-to-floor pedestals, smooth flat edges, stain-resistant laminate over 1 1/8" solid core high-performance particleboard, 3" round cord management grommets, with drawers on full extension ball-bearing suspensions.  
**Model #** DESK: H105890.CC - 72"W x 36"D x 29 1/2"H Double Pedestal Desk. All drawers lock, two cord grommets in top  
**Model #** CREDENZA: H10541X.CC - 69 1/2"W x 22 3/4"D Credenza Shell with 10" modesty panel  
**Model #** (TWO) PEDESTALS: H10504.CC - Floor-standing Full Height Pedestal. 15-5/8W x 22-3/4D x 28H File/File Pedestal with removable core lock, to be used with H10541X.CC credenza shell  
**Model #** HUTCH: H10534K.CC - 72"W x 14 5/8"D x 37 1/8"H Stack-on-Storage hutch, locking, with four self-closing laminate doors and 19 3/4" clear above credenza.  
**Model #** BACK ENCLOSURE (for stack-on-storage): H105856 69 3/4" W for 72"W H10534K  
**Model #** TACKBOARD: H90056.ECH10 (Etch Highlight)  
**Grommet:** See individual model descriptions above for grommet count and location.  
**Lock:** All lockable components above to receive a HON "One Key" lock with the same key number on a room-to-room basis: HF23B.X; Order also to include one removable lock core kit: HF27B



Stack On Hutch



Credenza



Desk

	W	D	H	A.H.	S.H.	DIA.
--	---	---	---	------	------	------

Dimensions:

1. Image is for reference only. Colors, finishes, and various components shown in image may not apply. Ref. Item model number and description for correct information only.

Project: Congress Admin Reno FFE  
Project #: 21013.1

Issue Date: 14 JUN 2021  
Revision Date: 25 JUN 2021

Total Quantity: 1

**Item:** Private Office Suite  
**Manufacturer:** HON Company  
**Contact Name:** Kristi Furey  
**Contact Number:** P: 816.820.6258  
**Contact Email:** FureyK@honcompany.com  
**Manufacturer:** HON Company  
**Series:** 10500 Series  
**Finish:** Harvest C  
**Description:** Office suite with factory-configured desks and returns with full-to-floor pedestals, smooth flat edges, stain-resistant laminate over 1 1/8" solid core high-performance particleboard, 3" round cord management grommets, with drawers on full extension ball-bearing suspensions.  
**Model #** DESK: H105895R.CC - 72"W x 36"D x 29 1/2"H, Rectangle Top Single Pedestal Desk, Right. Box/box/file drawers, lockable, with two cord grommets.  
**Model #** RETURN: H10561X.CC - 48"W x 24"D x 29 1/2"H, Return Shell with 10"H modesty panel. One work surface grommet.  
**Model #** PEDESTAL: H10504.CC - Floorstanding Full Height Pedestal. 15-5/8W x 22-3/4D x 28H File/File Pedestal with removable core lock, to be used with H10561X.CC Return Shell.  
**Model #** HUTCH: H105327K.CC - 78"W x 14 5/8"D x 37 1/8"H, 4 doors, locking  
**Model #** BACK ENCLOSURE (for stack-on-storage): H105857  
**Model #** TACKBOARD: H90057.ECH10 (Etch Highlight)  
**Grommet:** See individual model descriptions above for grommet count and location.  
**Lock:** All lockable components above to receive a HON "One Key" lock with the same key number on a room-to-room basis: HF23B.X; Order also to include one removable lock core kit: HF27B



Desk



Dimensions:	W	D	H	A.H.	S.H.	DIA.
-------------	---	---	---	------	------	------

1. Image is for reference only. Colors, finishes, and various components shown in image may not apply. Ref. Item model number and description for correct information only.

Project: Congress Admin Reno FFE  
Project #: 21013.1

Issue Date: 14 JUN 2021  
Revision Date: 25 JUN 2021

Total Quantity: 1

**Item:** Private Office Suite  
**Manufacturer:** HON Company  
**Contact Name:** Kristi Furey  
**Contact Number:** P: 816.820.6258  
**Contact Email:** FureyK@honcompany.com  
**Manufacturer:** HON Company  
**Series:** 10500 Series, unless noted otherwise  
**Description:** Office suite with factory-configured desks and returns with full-to-floor pedestals, smooth flat edges, stain-resistant laminate over 1 1/8" solid core high-performance particleboard, 3" round cord management grommets, with drawers on full extension ball-bearing suspensions  
**Finish:** Harvest (C)  
**Model #** DESK: H105890.CC - 72"W x 36"D x 29 1/2"H Double Pedestal Desk. All drawers lock, two cord grommets in top  
**Model #** CREDENZA: H105691X.CC - 42"W x 24"D x 29 1/2"H, (1 grommet) Shell with 10"H modesty panel. One work surface grommet.  
**Model #** PEDESTAL: H10504.CC - Floorstanding Full Height Pedestal. 15-5/8W x 22-3/4D x 28H File/File Pedestal with removable core lock, to be used with H105691X.CC  
**Model #** HUTCH: H105322K.CC - 42"W x 14 5/8"D x 37 1/8"H, 2 doors  
**Model #** BACK ENCLOSURE (for stack-on-storage) H105852 39 3/4" W - for 42" W model H105322K  
**Model #** TACKBOARD: H90052.ECH10  
**Grommet:** See individual model descriptions above for grommet count and location.  
**Lock:** All lockable components above to receive a HON "One Key" lock with the same key number on a room-to-room basis: HF23B.X; Order also to include one removable lock core kit: HF27B



Desk



Pedestal

	W	D	H	A.H.	S.H.	DIA.
--	---	---	---	------	------	------

Dimensions:

1. Image is for reference only. Colors, finishes, and various components shown in image may not apply. Ref. Item model number and description for correct information only.

Project: Congress Admin Reno FFE  
Project #: 21013.1

Issue Date: 14 JUN 2021  
Revision Date: 25 JUN 2021

Total Quantity: 1

**Item:** Side Cube Table  
**Manufacturer:** HON Company  
**Contact Name:** Kristi Furey  
**Contact Number:** P: 816.820.6258  
**Contact Email:** FureyK@honcompany.com  
**Series:** Flock  
**Model #:** HFTLS24.N.0.LNR1.L.PR8  
**Description:** Laminate Collaborative Cube Table  
**Finish:** Natural Recon LNR1  
**Top:** Natural Recon LNR1  
**Edge:** Natural Recon LNR1  
**Base:** Textured Silver  
**Glide/Caster:** Tapered Square Leg

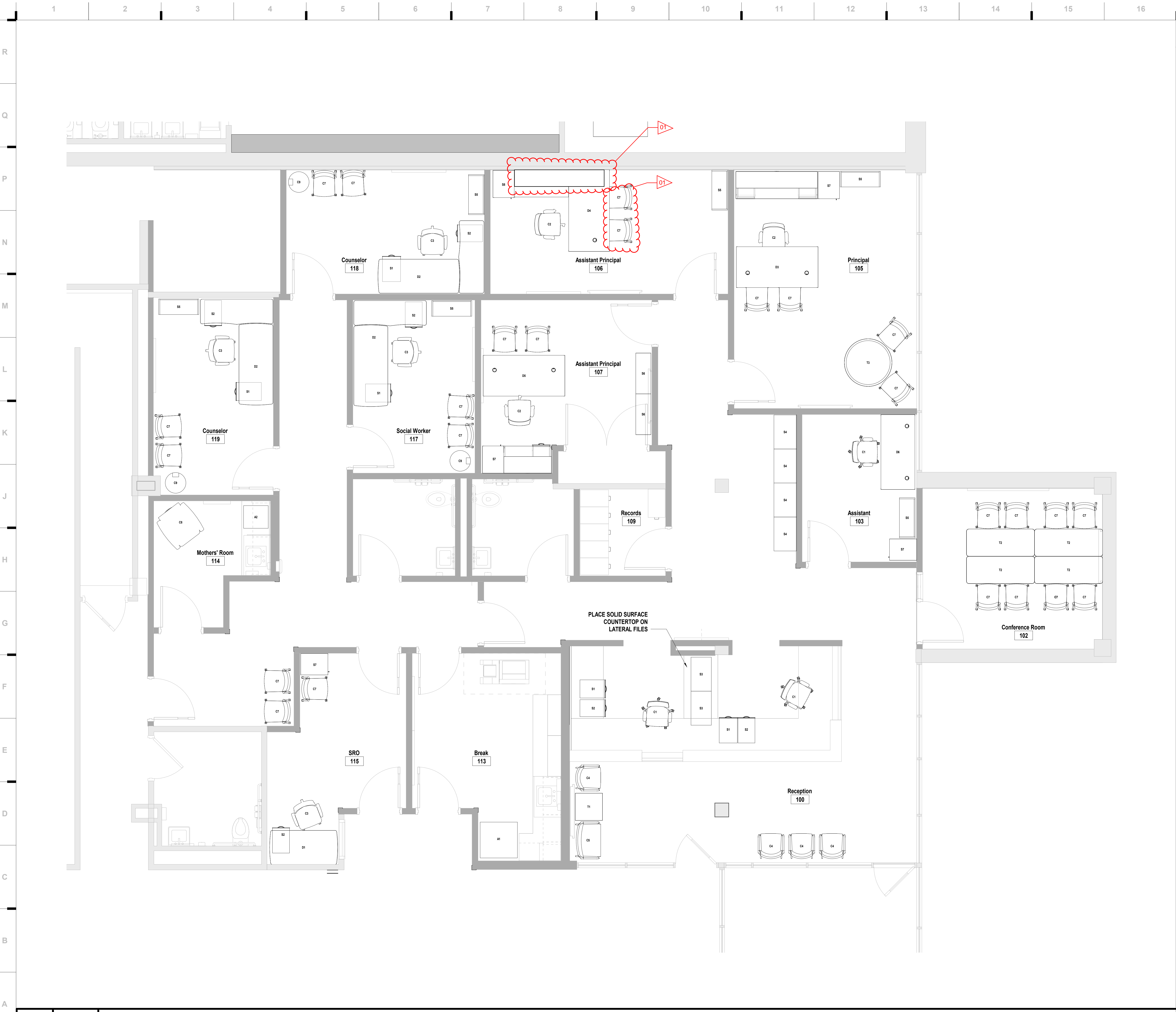


	W	D	H	A.H.	S.H.	DIA.
<b>Dimensions:</b>	24"	24"	17"			

1. Image is for reference only. Colors, finishes, and various components shown in image may not apply. Ref. Item model number and description for correct information only.



6/25/2021 12:40:08 PM



**A1** Scale Congress MS - Administration - Furniture Plan

SHEET KEYNOTE LEGEND

we design the future®  
1828 Walnut Street Suite 922  
Kansas City, MO 64108  
1 816.442.7700  
115 Wilcox Street Suite 210  
Castle Rock, CO 80104  
1 720.949.1689  
HOLLISANDMILLER.COM

Hollis + Miller Architects  
Missouri State Certificate of Authority  
Architecture # 00001671  
Structure # 2006031333

**Smith & Boucher, Inc.**  
Mech/Elec/Plumb Engineer  
State Certificate of Authority # EGC-0001767  
25501 W. Valley Parkway, Suite 200  
Olathe, Kansas, 66210  
913.344.0031 phone  
913.345.0617 fax

**Congress Middle School**  
Parkhill School District  
8150 N. Congress Ave, Kansas City, MO. 64152

100% Construction Documents

REVISIONS:		
#	Description	Date
1	Addendum 01	06.25.2021



JOB NO: 21013  
DRAWN BY: ML  
CHECKED BY: MW  
DATE: 04.16.2021

**A701**